

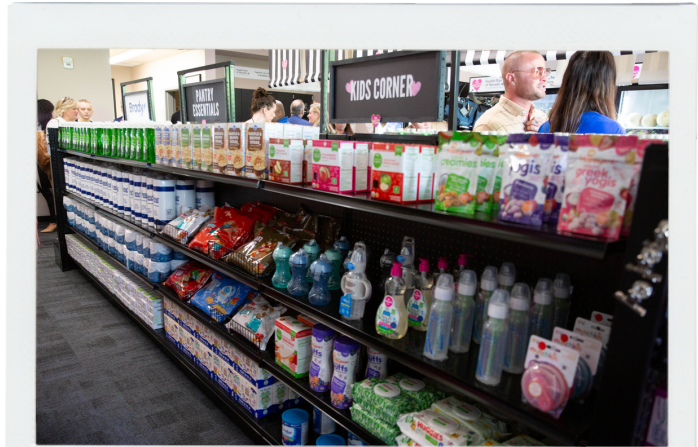


# FAMILY SUPPORT CENTER COMMUNITY MARKET

Sponsored by Health Plan of Nevada

## This location provides:

- ♥ Fresh Produce
- ♥ Pantry Staples
- ♥ Household Essentials
- ♥ Wraparound Services
- ♥ Resource Navigation



**Welcome!**

### Community Market at Family Support Center

**Make an appointment by emailing:**

[FSCMarket@TheJustOneProject.org](mailto:FSCMarket@TheJustOneProject.org)

**Call our team:**

702-799-0072 Ext. 0072

**Website:**

[TheJustOneProject.org](http://TheJustOneProject.org)

#### Hours

By Appointment Only  
Monday - Friday  
8am - 2pm  
Closed on CCSD Holidays

#### Location

1720 S. Maryland Pkwy.  
Rm. 214  
Las Vegas, NV 89104  
Maryland Pkwy. + Oakey Blvd.

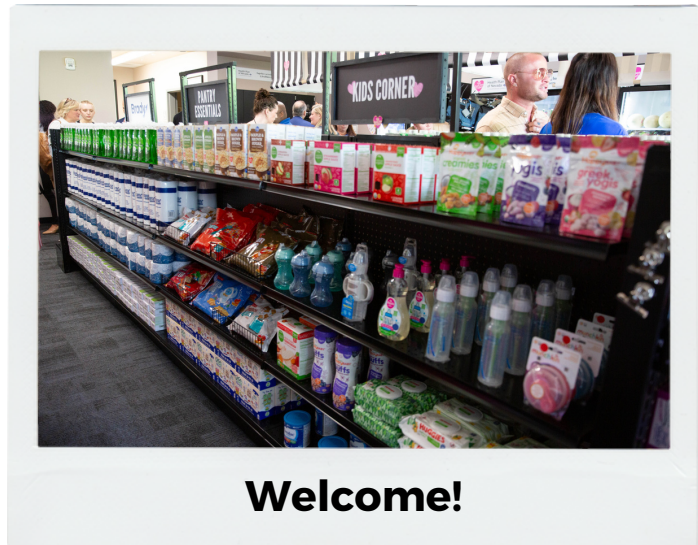


# FAMILY SUPPORT CENTER COMMUNITY MARKET

Patrocinado por Health Plan of Nevada

## This location provides:

- ♥ Productos frescos
- ♥ Básicos en la despensa
- ♥ Artículos de primera necesidad
- ♥ Servicios integrales
- ♥ Navegación de recursos



**Welcome!**

## Community Market at Family Support Center

**Haga una cita:**

[FSCMarket@TheJustOneProject.org](mailto:FSCMarket@TheJustOneProject.org)

**llama a nuestro equipo:**

702-799-0072 Ext. 0072

**Sitio web:**

[TheJustOneProject.org](http://TheJustOneProject.org)

### Horas

Solo por cita  
Lunes - Viernes  
8am - 2pm

Cerrado los días festivos del CCSD

### Ubicación

1720 S. Maryland Pkwy.  
Rm. 214  
Las Vegas, NV 89104  
Maryland Pkwy. + Oakey Blvd.